

Ordering information

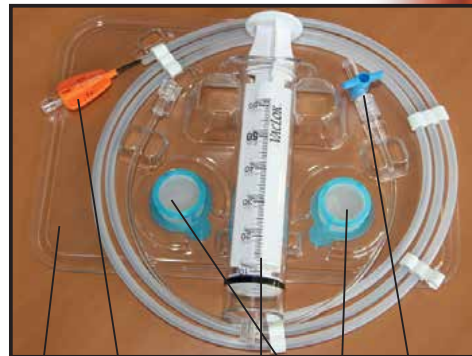
Reference	Description	Box quantity
SCAC0001	StemiCath Aspiration Catheter 6F	1 per box
SCAC0002	StemiCath Aspiration Catheter 7F	1 per box

Product specifications

Coating	Hydrocoat® coating on distal part
Usable length	145 cm
Entry profile	0.015"
Extraction lumen	0.93mm ² for 6F / 1.43mm ² for 7F
Aspiration speed*	12.5s for 6F / 7s for 7F
Radiopaque marker	1mm at 4mm from the tip.
Wire compatibility	0.014"

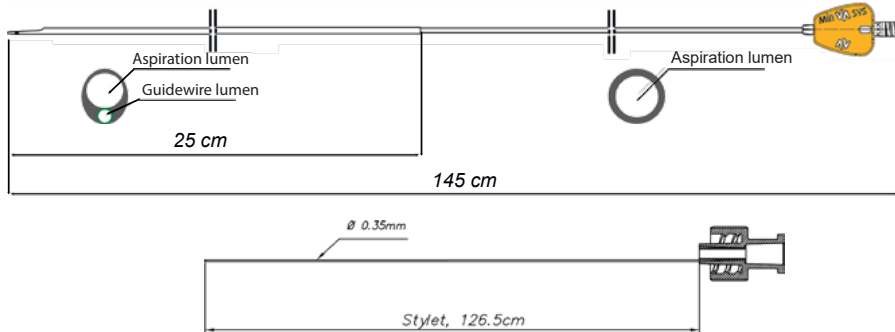
* Extraction of 20ml of water

- 1 - Thermoformed support
- 2 - StemiCath with integrated stylet
- 3 - Syringe Vaclock 60mL
- 4 - 2 Filter baskets 40µm
- 5 - Low pressure extension line with 2-way stopcock



1 2 3 4 5

Design of the catheter and of the stylet



*Keep it Simple
and Efficient*

Catheter for thrombo-aspiration
in acute **ST-Elevation**

Myocardial
Infarction



BSTE001_EN_Rev1

minVASYS

7 rue du Fossé Blanc
92230 Gennevilliers - FRANCE
Tél : +33 (0)1 47 90 70 30
Fax : +33 (0)1 47 91 05 85
info@minvasys.com - www.minvasys.com

minVASYS

Keep it simple...

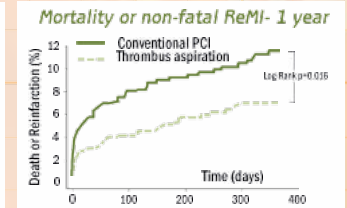
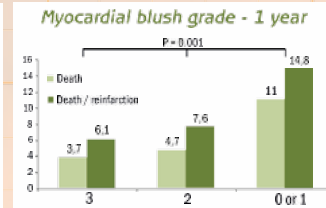
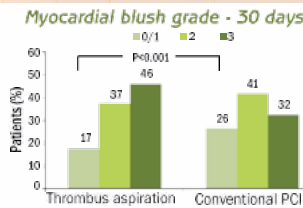
StemiCath

Thrombo-Aspiration Catheter

Simplicity of use

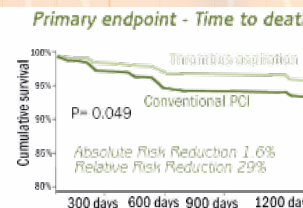
- Consistent shaft construction and removable stylet to avoid choosing between crossability and kink-resistance.
- Translucid aspiration lumen for an easy control after catheter withdrawal.
- Single-handed operator device.
- Single radiopaque marker mounted on a short 0.015" distal tip for accurate positioning.
- High ratio ID/OD enabling outstanding aspiration speed.

TAPAS Trial
1071 patients with 1-year follow-up

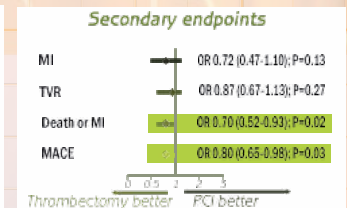
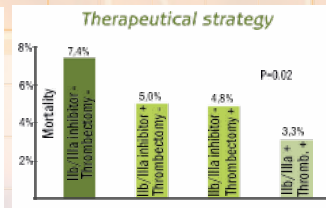


Svilicas T et al, NEJM 2008

ATTEMPT Study
17 trials pooled and 2686 patients evaluated



Burzotta F et al, European Heart Journal (2009) 30, 2193-2203



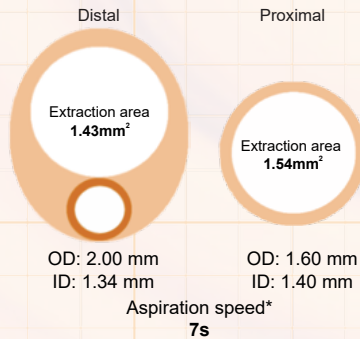
Aspiration capacity

6 Fr guiding catheter



*Extraction of 20cc of water

7 Fr guiding catheter



... and efficient.

Efficacy of the technique

TAPAS conclusions:

- Thrombus aspiration lowers mortality and combined mortality
- Non-fatal reinfarction at 1 year.

ATTEMPT conclusions:

- Thrombectomy (in particular when performed by manual thrombectomy catheters) improves survival.
- Thrombectomy and IIb/IIIa inhibitors may synergistically improve the clinical outcome.
- Estimate of 34 patients needed to treat to prevent one death at 1 year.